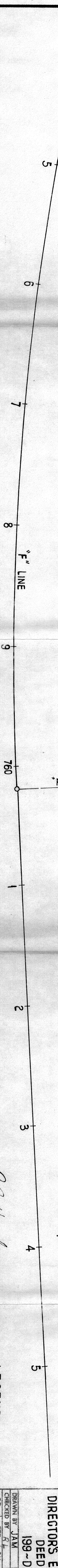
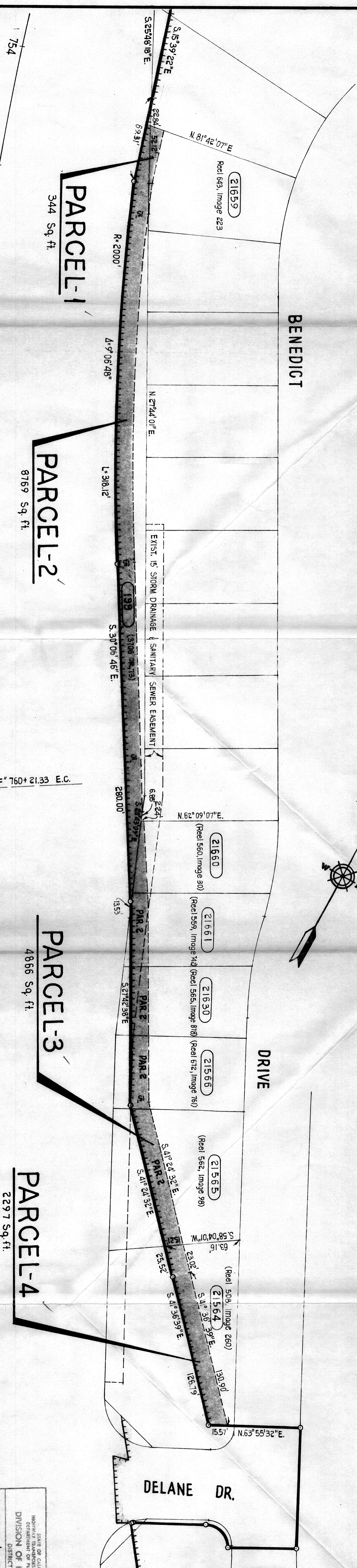
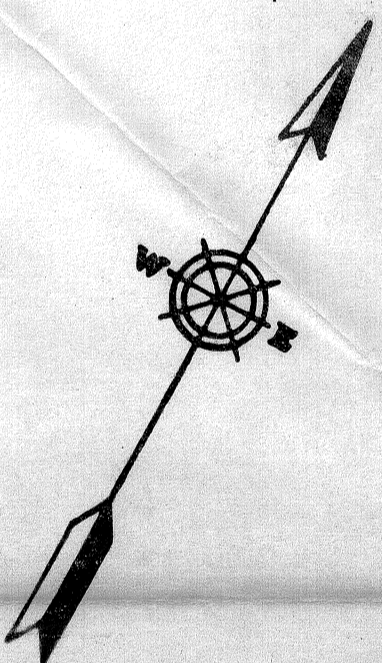


SAN LEANDRO

BENEDICT

DRIVE

DELANE DR.



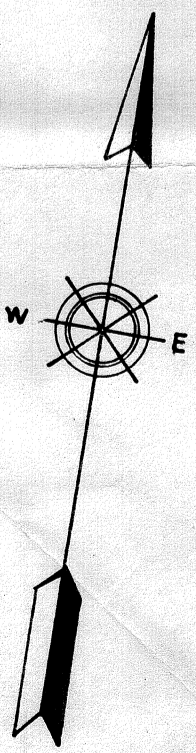
Approved: *R. A. ...*
Deputy District Engineer

LEGEND
Access Prohibited

STATE OF CALIFORNIA	
HIGHWAY TRANSPORTATION AGENCY	
DEPARTMENT OF PUBLIC WORKS	
DIVISION OF HIGHWAYS	
DISTRICT IV	
DIRECTOR'S EASEMENT	
DEED	
199~DED	
DRAWN BY JAM	DATE 4-29-65
CHECKED BY R.L.	SCALE 1"=40'
CO. RTE. BM.	DR. NO.
ALA 580 34.1	Sheet 2 of 3

SAN LEANDRO

"4" LINE



201

F.O.C. No. 13392
 Rec. 10-31-34
 VOL. 3136 OR, 15

N.78°42'07"E. 8.00'
 S.11°17'53"E. 124.27'
 S.5°50'33"E. 183.08'
 S.5°50'33"E. 101.23'
 S.11°17'53"E. 69.20'
 TAN. N.31°39'24"E.

21578 PAR. 2
 Recorded 9-5-62
 Reel 671 - Imoge 223

21573 PAR. 1, 2, 4, 3
 Recorded 12-13-61
 Reel 472 - Imoge 951

21572
 Recorded 4-14-59
 VOL. 8992- Pg. 569

21569 PAR. 2B
 FOC No 323846
 Recorded 5-28-64
 Reel 1216 - Imoge 174

21568
 Recorded 1-4-62
 Reel 487 - Imoge 308

PARCEL-5

10173 Sq. Ft.

DEL

MONTE

TERRACE

AVE.

GRAND

LEGEND

Access Prohibited

STATE OF CALIFORNIA
 HIGHWAY TRANSPORTATION AGENCY
 DEPARTMENT OF PUBLIC WORKS
 DIVISION OF HIGHWAYS
 DISTRICT IV

DIRECTOR'S EASEMENT
 DEED
 199 - DED

DRAWN BY JAM DATE 6-16-65
 CHECKED BY F.L. SCALE 1" = 40'

CO. RTE. P.M. DR. NO.
 ALA 580 34.1 Sheet 3 of 3